



Report of Test

LLIA001574-006A-R01*

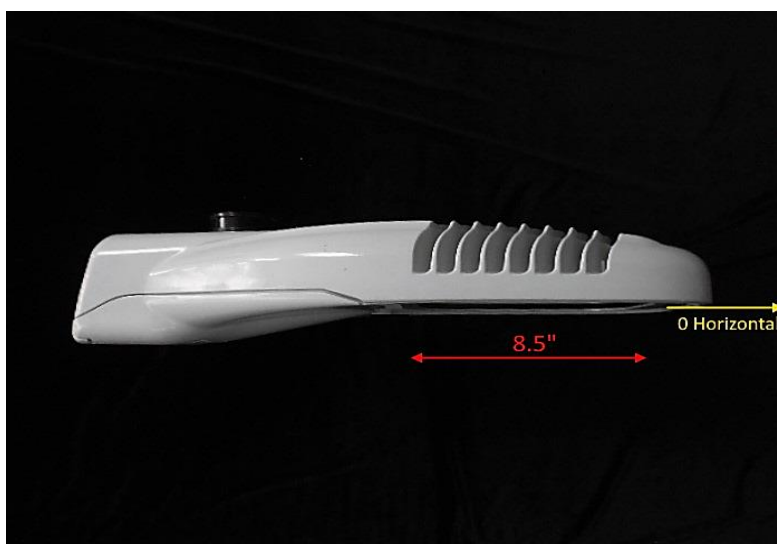
Roadway/Area Light Distribution Photometry Test Report

Catalog Number: NXT-24S-5-X-2ES-6-XX-4-XX-X-XX-X

Pole/arm mounted, grey painted cast aluminum housing and door/driver compartment cover, one circuit board, one clear plastic lens with optic below each LED and clear flat glass enclosure.

24 white LEDs

Osram Optotronic OT100W/UNV/800C/2DIM/P6 LED driver labeled as 600mA, WH91-5U1-03 surge suppressor



Prepared For:
LED Roadway Lighting
84 Chain Lake Drive
Suite 403

Halifax, Nova Scotia B3S 1A2, Canada

Performance Summary			
Input Voltage	120.0 V	Luminous Flux	5609.6 Lumens
Input Current	0.3997 A	Total Efficacy	118.0 Lm/W
Input Power	47.52 W		
Frequency	59.99 Hz	Roadway Throw	Medium
Power Factor	0.991	Roadway Type	Type III
Current THD	2.0 %	IES BUG Rating	B2 - U0 - G1

*This test report supersedes test report LLIA001574-006A

This test report was issued by LightLab International Allentown, LLC without alterations or erasures.

Test date: 11/04/2021

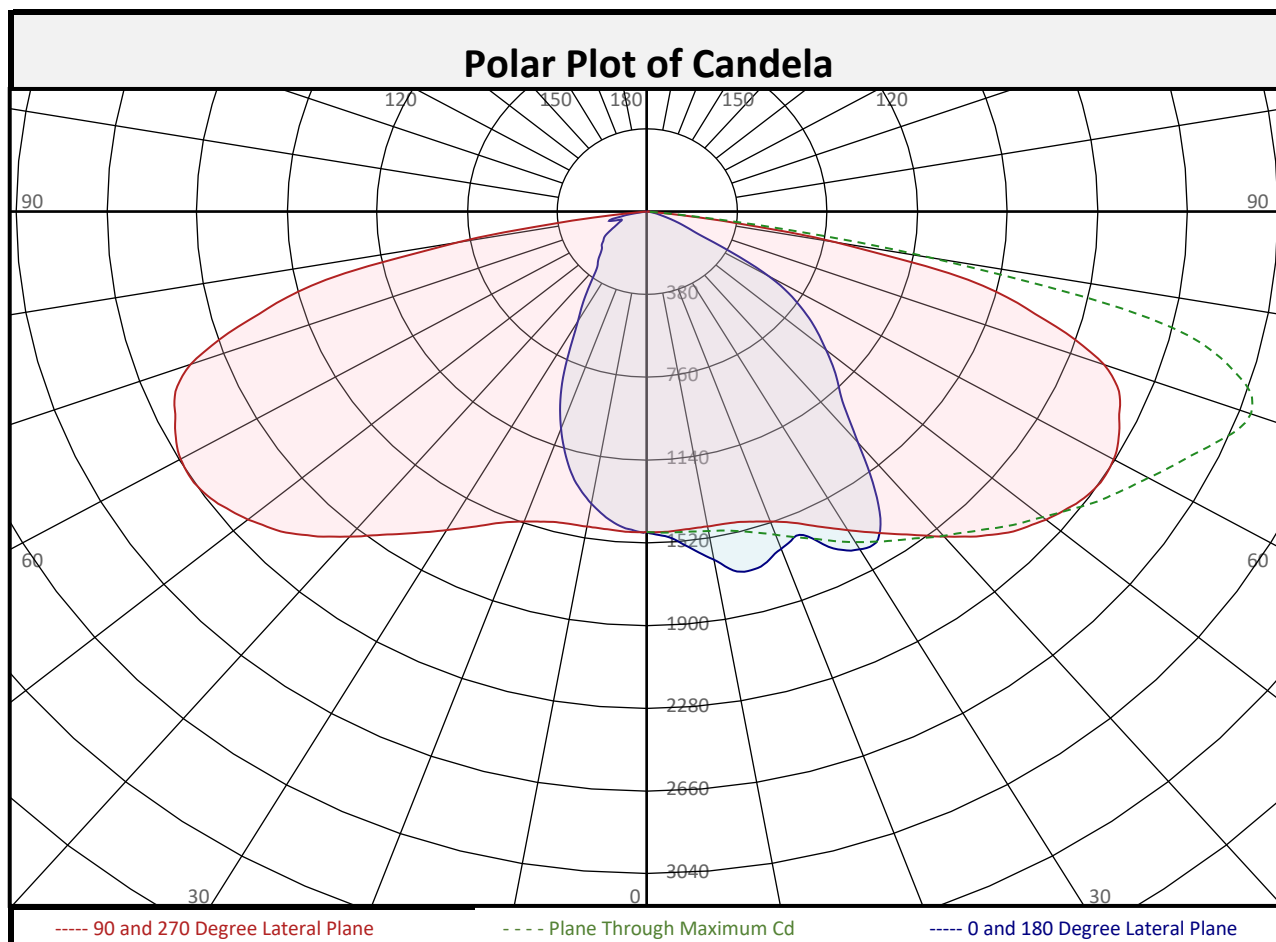
Report date: 11/11/2021

Signed: _____



Report of Test

LLIA001574-006A-R01

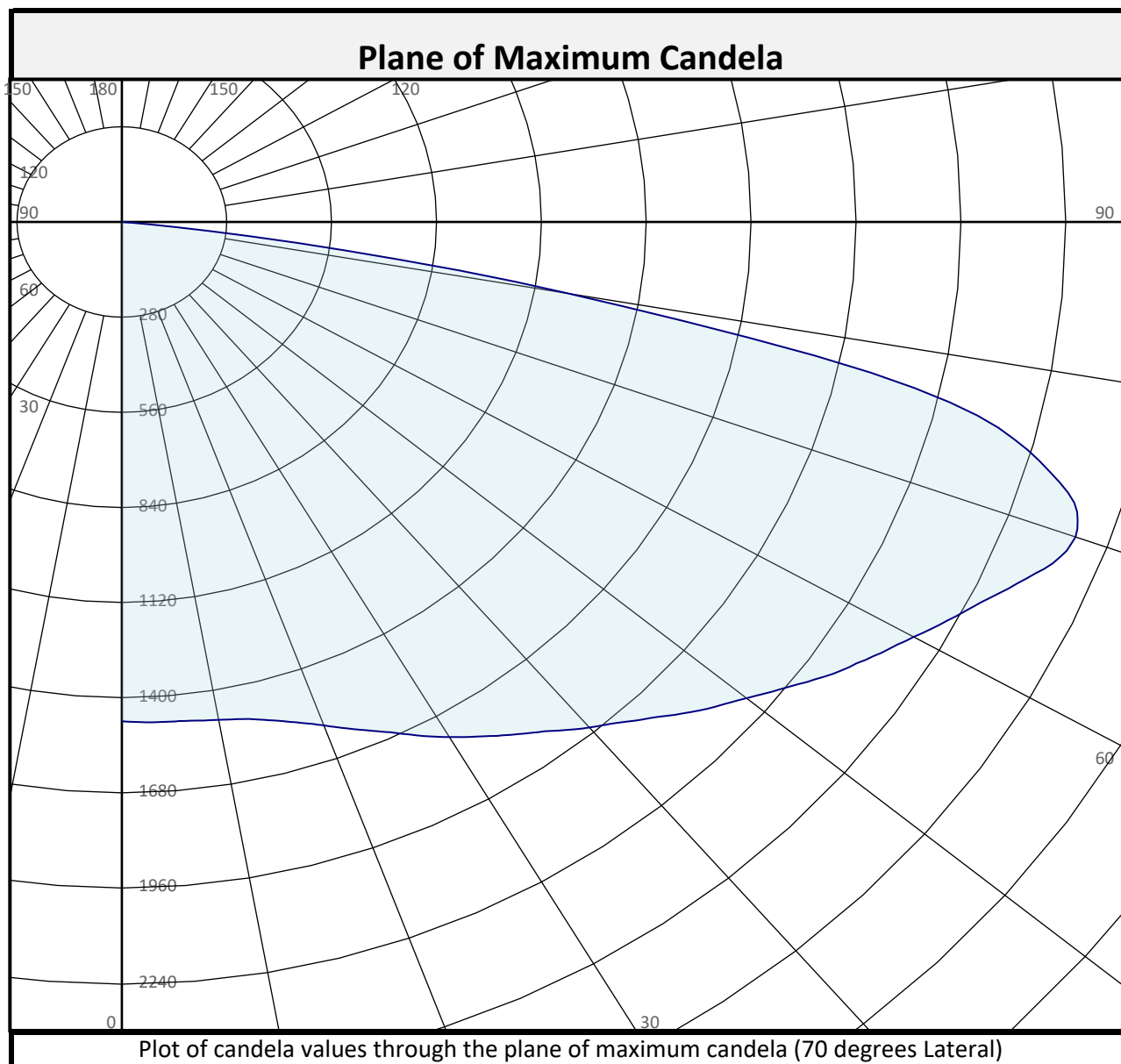


Zonal Flux Summary										
Zone (Deg Vert)	Flux (Lumens)	Percent of Total		Zone (Deg Vert)	Flux (Lumens)	Percent of Total		Zone (Deg Vert)	Flux (Lumens)	Percent of Total
0-10	140.9	2.5%		90-100	0.0	0.0%		0-20	558.8	10.0%
10-20	417.8	7.4%		100-110	0.0	0.0%		0-30	1215	21.7%
20-30	656.3	11.7%		110-120	0.0	0.0%		0-40	2078	37.0%
30-40	863.2	15.4%		120-130	0.0	0.0%		0-60	4089	72.9%
40-50	981.9	17.5%		130-140	0.0	0.0%		0-80	5552	99.0%
50-60	1029	18.3%		140-150	0.0	0.0%		10-90	5469	97.5%
60-70	910.1	16.2%		150-160	0.0	0.0%		20-50	2501	44.6%
70-80	552.2	9.8%		160-170	0.0	0.0%		40-90	3531	62.9%
80-90	57.9	1.0%		170-180	0.0	0.0%		60-90	1520	27.1%
0-90	5610	100.0%		90-180	0.0	0.0%		0-180	5610	100.0%

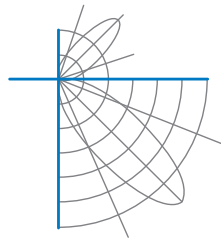


Report of Test

LLIA001574-006A-R01

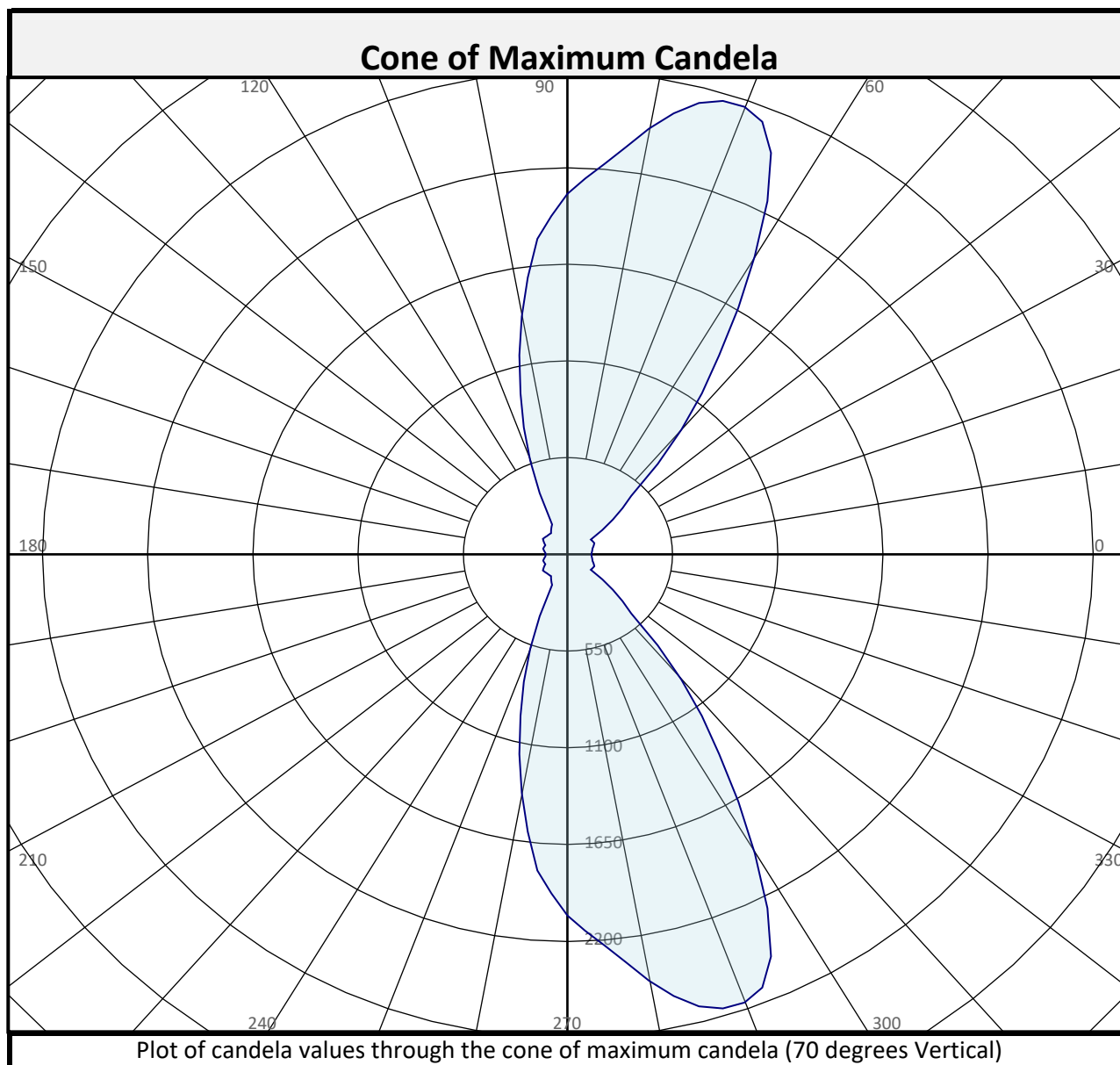


Street and House Side Flux Summary						
	Downward		Upward		Total	
	Lumens	% of Total	Lumens	% of Total	Lumens	% of Total
Street Side	3679.3	65.6%	0.0	0.0%	3679.3	65.6%
House Side	1930.3	34.4%	0.0	0.0%	1930.3	34.4%
Total	5609.6	100.0%	0.0	0.0%	5609.6	100.0%



Report of Test

LLIA001574-006A-R01



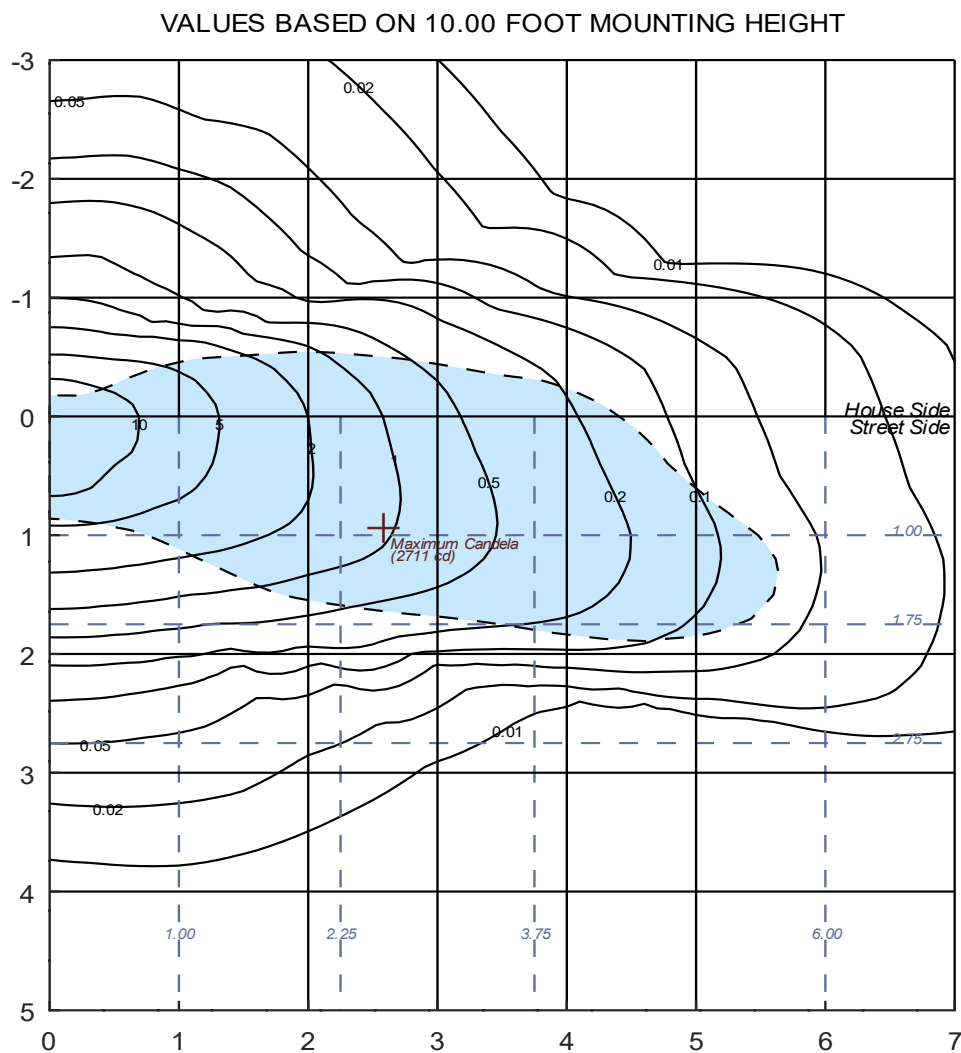
Street and House Side Flux Summary						
	Downward		Upward		Total	
	Lumens	% of Total	Lumens	% of Total	Lumens	% of Total
Street Side	3679.3	65.6%	0.0	0.0%	3679.3	65.6%
House Side	1930.3	34.4%	0.0	0.0%	1930.3	34.4%
Total	5609.6	100.0%	0.0	0.0%	5609.6	100.0%



Report of Test

LLIA001574-006A-R01

Iso-Illuminance Plot



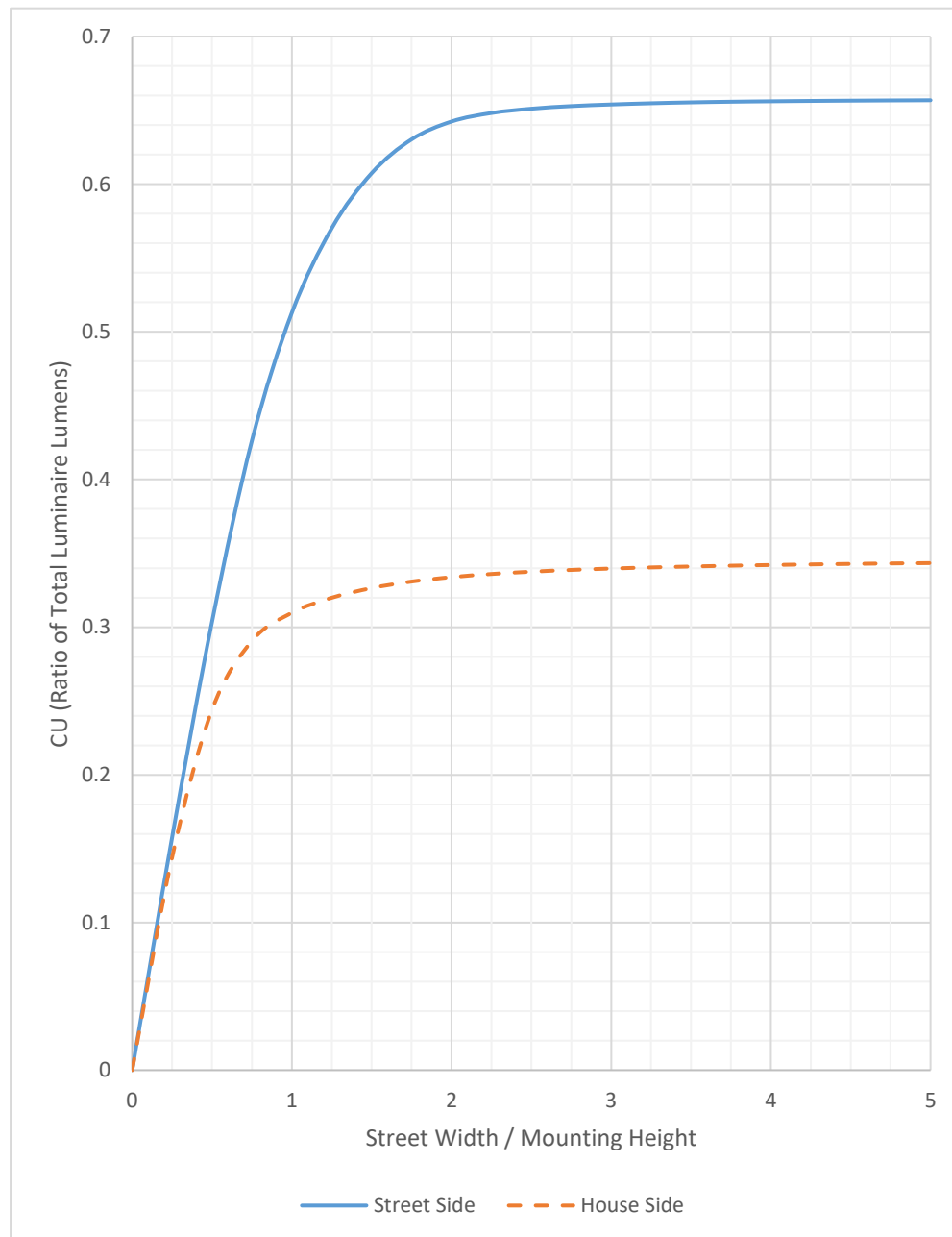
The isofootcandle values shown in the plot above are based on a mounting height of $h = 10.0$ feet. Grid values show multiples of mounting height. The isoilluminance contour lines are expressed in units of footcandles. The values expressed are based on the direct light from a single unit without the contribution of room reflections.



Report of Test

LLIA001574-006A-R01

Coefficients of Utilization Plot

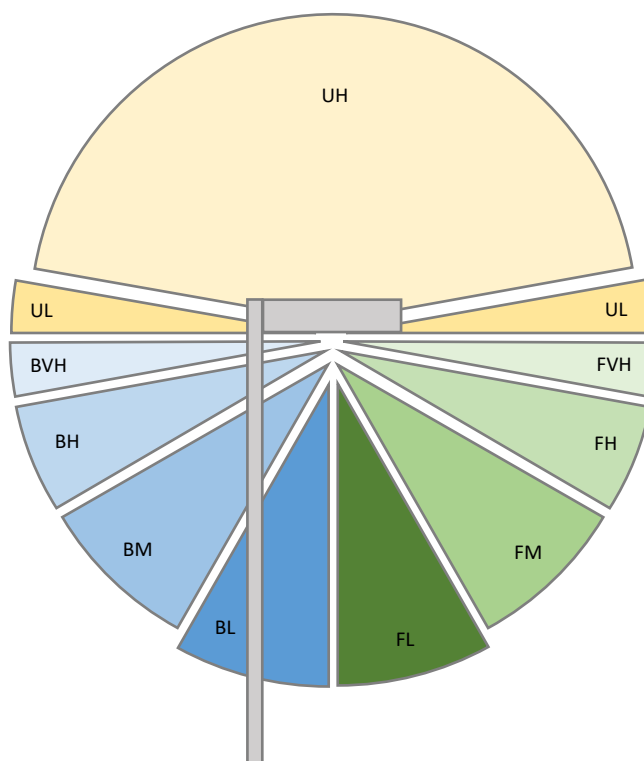




Report of Test

LLIA001574-006A-R01

LCS Tables and Bug Classification



Back Light

BL - Back Low (0°-30°)	531.0 Lm
BM - Back Mid (30°-60°)	967.6 Lm
BH - Back High (60°-80°)	415.1 Lm
BVH - Back Very High (80°-90°)	16.5 Lm

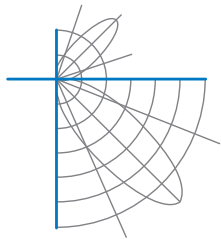
Uplight

UL - Upward Low (90°-100°)	0.0 Lm
UH - Upward High (100°-180°)	0.0 Lm

Forward Light

FL - Forward Low (0°-30°)	684.1 Lm
FM - Forward Mid (30°-60°)	1906.7 Lm
FH - Forward High (60°-80°)	1047.1 Lm
FVH - Forward Very High (80°-90°)	41.3 Lm

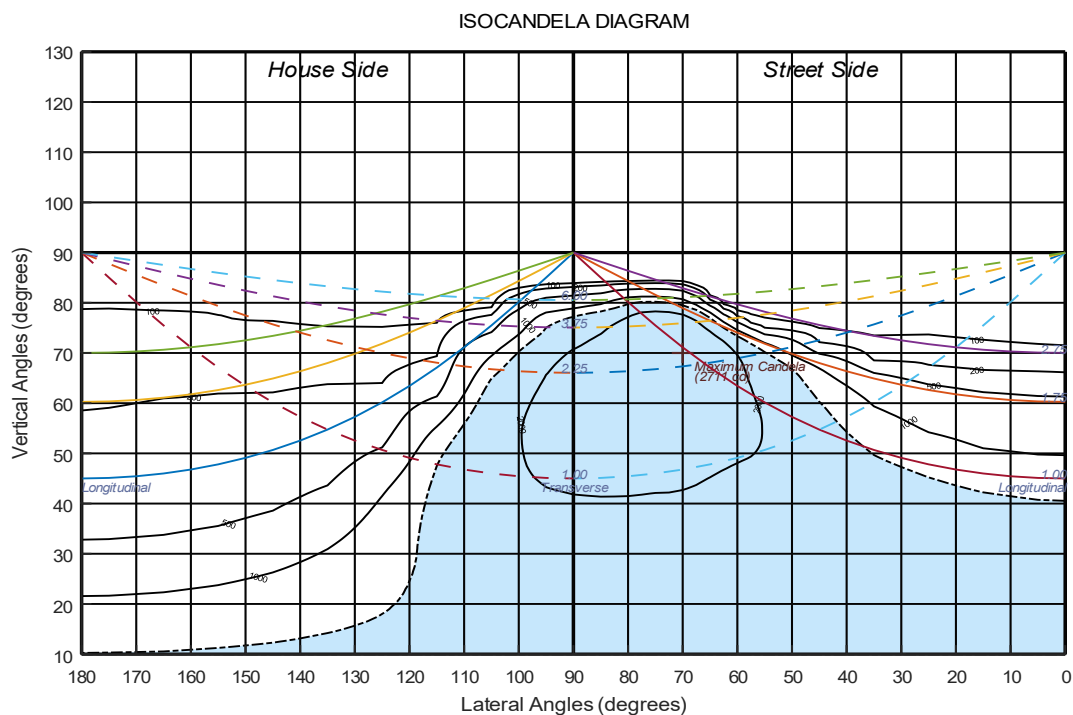
BUG Ratings: B2 - U0 - G1




Report of Test

LLIA001574-006A-R01

Iso-Candela Plot



 Half-max Candela Contour Line



Report of Test

LLIA001574-006A-R01

Luminous Intensity (Candela) Table

		Lateral (C-Plane) Angles														
		0	5	15	25	35	45	55	57.5	60	62.5	65	67.5	70	72.5	75
Vertical (Gamma) Angles - Data was acquired in 0.5° increments, 2.5° increments shown.	0	1469	1469	1469	1469	1469	1469	1469	1469	1469	1469	1469	1469	1469	1469	1469
	2.5	1488	1487	1487	1484	1483	1480	1478	1476	1477	1478	1476	1473	1474	1474	1472
	5	1518	1517	1516	1509	1501	1494	1487	1486	1484	1483	1481	1479	1476	1476	1475
	7.5	1568	1567	1564	1554	1539	1520	1499	1497	1494	1490	1487	1484	1480	1479	1476
	10	1620	1622	1616	1602	1580	1555	1525	1517	1511	1504	1499	1493	1488	1485	1483
	12.5	1686	1687	1677	1654	1622	1594	1554	1545	1536	1526	1516	1507	1499	1494	1489
	15	1703	1704	1703	1694	1671	1626	1583	1572	1562	1551	1540	1528	1518	1508	1501
	17.5	1686	1687	1690	1693	1691	1665	1615	1605	1593	1582	1569	1555	1544	1531	1521
	20	1649	1650	1656	1668	1679	1685	1648	1634	1625	1614	1602	1589	1577	1564	1547
	22.5	1619	1621	1631	1638	1651	1678	1681	1670	1656	1646	1639	1627	1616	1601	1587
	25	1655	1649	1626	1615	1627	1663	1699	1699	1692	1683	1674	1665	1656	1646	1634
	27.5	1747	1743	1720	1647	1619	1647	1704	1716	1719	1720	1715	1709	1703	1697	1686
	30	1789	1791	1781	1734	1647	1644	1705	1723	1742	1755	1757	1755	1751	1747	1738
	32.5	1801	1803	1807	1776	1722	1661	1713	1735	1759	1781	1793	1797	1795	1792	1787
	35	1719	1723	1760	1773	1769	1705	1734	1759	1781	1806	1828	1836	1841	1836	1832
	37.5	1567	1575	1639	1711	1771	1767	1764	1787	1813	1839	1865	1880	1888	1885	1881
	40	1389	1401	1489	1600	1731	1804	1794	1816	1840	1870	1901	1927	1942	1950	1949
	42.5	1246	1257	1341	1477	1641	1796	1831	1852	1880	1911	1947	1976	1995	2008	2011
	45	1148	1154	1218	1365	1540	1751	1879	1894	1922	1955	1994	2029	2056	2074	2081
	47.5	1072	1078	1126	1260	1434	1680	1925	1954	1983	2021	2059	2093	2121	2134	2142
	50	988	992	1040	1167	1345	1603	1956	2015	2054	2091	2128	2156	2180	2194	2201
	52.5	908	908	947	1073	1268	1542	1977	2067	2129	2172	2204	2229	2247	2262	2265
	55	822	826	863	966	1182	1488	1978	2096	2188	2242	2276	2301	2319	2328	2328
	57.5	727	730	772	877	1078	1437	1960	2094	2200	2277	2329	2362	2379	2383	2379
	60	599	605	659	778	975	1366	1919	2060	2189	2297	2379	2424	2442	2441	2430
	62.5	398	410	473	614	848	1261	1854	2014	2179	2319	2421	2482	2513	2508	2483
	65	228	236	261	368	634	1144	1769	1953	2151	2332	2464	2542	2585	2588	2554
	67.5	171	169	179	203	299	930	1648	1864	2105	2336	2515	2614	2667	2673	2631
	70	126	128	136	155	150	472	1384	1665	1961	2267	2521	2665	2711	2706	2659
	72.5	85	90	102	115	113	178	872	1207	1567	1968	2316	2537	2650	2658	2626
	75	58	60	71	82	84	99	204	455	862	1355	1862	2240	2465	2580	2571
	77.5	41	43	53	53	60	63	91	106	171	564	1194	1726	2048	2209	2248
	80	24	25	33	31	35	41	48	54	64	86	331	874	1207	1362	1421
	82.5	11	11	15	17	17	21	23	25	28	33	54	241	474	558	578
	85	3	3	3	5	6	7	9	10	10	11	13	18	29	33	32
	87.5	1	1	1	2	2	3	3	3	3	3	4	4	5	5	5
	90	0	0	0	0	0	0	0	0	0	0	0	0	0	0	0



Report of Test

LLIA001574-006A-R01

Luminous Intensity (Candela) Table

		Lateral (C-Plane) Angles														
		77.5	80	82.5	85	90	95	105	115	125	135	145	155	165	175	180
Vertical (Gamma) Angles - Data was acquired in 0.5° increments, 2.5° increments shown.	0	1469	1469	1469	1469	1469	1469	1469	1469	1469	1469	1469	1469	1469	1469	1469
	2.5	1472	1471	1471	1472	1471	1469	1465	1464	1461	1460	1460	1458	1459	1462	1462
	5	1474	1473	1470	1470	1468	1466	1461	1459	1454	1449	1447	1442	1440	1441	1442
	7.5	1477	1473	1470	1469	1466	1463	1456	1450	1442	1432	1422	1413	1407	1407	1405
	10	1480	1477	1474	1470	1467	1464	1454	1441	1423	1408	1390	1376	1366	1362	1360
	12.5	1485	1481	1477	1474	1468	1464	1453	1432	1405	1378	1352	1332	1316	1308	1305
	15	1497	1490	1487	1484	1475	1472	1455	1423	1383	1344	1308	1280	1256	1242	1240
	17.5	1514	1507	1502	1498	1492	1486	1462	1416	1359	1307	1255	1212	1179	1160	1156
	20	1538	1530	1525	1519	1513	1505	1473	1412	1338	1266	1193	1133	1090	1066	1063
	22.5	1573	1564	1557	1552	1542	1535	1488	1411	1317	1217	1123	1046	993	964	961
	25	1618	1605	1598	1593	1584	1573	1514	1413	1294	1161	1044	950	884	848	840
	27.5	1668	1654	1647	1641	1633	1619	1547	1417	1264	1100	955	838	753	708	701
	30	1723	1710	1700	1694	1687	1670	1585	1426	1232	1029	852	709	624	590	586
	32.5	1780	1767	1757	1752	1743	1726	1624	1438	1198	947	736	596	537	512	509
	35	1826	1818	1812	1809	1804	1783	1661	1445	1156	856	622	517	462	436	434
	37.5	1880	1878	1874	1873	1871	1843	1702	1446	1108	752	536	438	389	368	367
	40	1956	1956	1954	1955	1946	1913	1741	1439	1044	645	452	367	335	326	325
	42.5	2017	2027	2036	2040	2022	1979	1774	1425	966	545	374	325	312	306	305
	45	2084	2092	2104	2110	2092	2048	1804	1398	855	446	324	305	292	282	280
	47.5	2143	2149	2159	2165	2151	2098	1821	1355	714	359	300	286	271	260	259
	50	2202	2203	2209	2217	2198	2130	1818	1290	566	306	277	263	254	250	249
	52.5	2259	2254	2257	2260	2236	2160	1800	1180	433	282	256	246	253	241	237
	55	2315	2299	2291	2289	2269	2183	1766	1024	327	266	238	241	257	232	223
	57.5	2357	2330	2314	2305	2281	2180	1707	824	267	248	221	230	239	217	210
	60	2400	2357	2330	2314	2273	2152	1618	608	236	232	205	213	210	190	183
	62.5	2447	2387	2335	2308	2243	2098	1500	419	212	211	197	195	184	163	157
	65	2499	2419	2342	2294	2198	2021	1349	297	193	190	183	173	161	142	137
	67.5	2561	2470	2365	2293	2155	1934	1162	233	173	170	171	150	147	125	123
	70	2571	2461	2337	2231	2052	1803	948	190	149	150	157	127	131	116	114
	72.5	2546	2414	2265	2105	1854	1582	678	149	129	130	133	110	126	130	133
	75	2441	2272	2084	1895	1619	1357	421	113	102	104	112	101	145	164	165
	77.5	2155	1938	1720	1542	1305	1103	207	80	72	74	89	101	132	133	128
	80	1409	1299	1107	949	806	691	69	48	43	46	59	65	78	76	74
	82.5	575	546	481	391	316	257	26	26	23	24	29	31	31	10	4
	85	30	27	25	23	20	17	12	11	10	9	8	6	2	1	1
	87.5	5	6	6	6	5	5	4	3	3	2	1	0	0	0	0
	90	0	0	0	0	0	0	0	0	0	0	0	0	0	0	0



Report of Test

LLIA001574-006A-R01

Luminous Intensity (Candela) Table

		Lateral (C-Plane) Angles														
		0	5	15	25	35	45	55	57.5	60	62.5	65	67.5	70	72.5	75
Vertical (Gamma) Angles - Data was acquired in 0.5° increments, 2.5° increments shown.	90	0	0	0	0	0	0	0	0	0	0	0	0	0	0	0
	92.5	0	0	0	0	0	0	0	0	0	0	0	0	0	0	0
	95	0	0	0	0	0	0	0	0	0	0	0	0	0	0	0
	97.5	0	0	0	0	0	0	0	0	0	0	0	0	0	0	0
	100	0	0	0	0	0	0	0	0	0	0	0	0	0	0	0
	102.5	0	0	0	0	0	0	0	0	0	0	0	0	0	0	0
	105	0	0	0	0	0	0	0	0	0	0	0	0	0	0	0
	107.5	0	0	0	0	0	0	0	0	0	0	0	0	0	0	0
	110	0	0	0	0	0	0	0	0	0	0	0	0	0	0	0
	112.5	0	0	0	0	0	0	0	0	0	0	0	0	0	0	0
	115	0	0	0	0	0	0	0	0	0	0	0	0	0	0	0
	117.5	0	0	0	0	0	0	0	0	0	0	0	0	0	0	0
	120	0	0	0	0	0	0	0	0	0	0	0	0	0	0	0
	122.5	0	0	0	0	0	0	0	0	0	0	0	0	0	0	0
	125	0	0	0	0	0	0	0	0	0	0	0	0	0	0	0
	127.5	0	0	0	0	0	0	0	0	0	0	0	0	0	0	0
	130	0	0	0	0	0	0	0	0	0	0	0	0	0	0	0
	132.5	0	0	0	0	0	0	0	0	0	0	0	0	0	0	0
	135	0	0	0	0	0	0	0	0	0	0	0	0	0	0	0
	137.5	0	0	0	0	0	0	0	0	0	0	0	0	0	0	0
	140	0	0	0	0	0	0	0	0	0	0	0	0	0	0	0
	142.5	0	0	0	0	0	0	0	0	0	0	0	0	0	0	0
	145	0	0	0	0	0	0	0	0	0	0	0	0	0	0	0
	147.5	0	0	0	0	0	0	0	0	0	0	0	0	0	0	0
	150	0	0	0	0	0	0	0	0	0	0	0	0	0	0	0
	152.5	0	0	0	0	0	0	0	0	0	0	0	0	0	0	0
	155	0	0	0	0	0	0	0	0	0	0	0	0	0	0	0
	157.5	0	0	0	0	0	0	0	0	0	0	0	0	0	0	0
	160	0	0	0	0	0	0	0	0	0	0	0	0	0	0	0
	162.5	0	0	0	0	0	0	0	0	0	0	0	0	0	0	0
	165	0	0	0	0	0	0	0	0	0	0	0	0	0	0	0
	167.5	0	0	0	0	0	0	0	0	0	0	0	0	0	0	0
	170	0	0	0	0	0	0	0	0	0	0	0	0	0	0	0
	172.5	0	0	0	0	0	0	0	0	0	0	0	0	0	0	0
	175	0	0	0	0	0	0	0	0	0	0	0	0	0	0	0
	177.5	0	0	0	0	0	0	0	0	0	0	0	0	0	0	0
	180	0	0	0	0	0	0	0	0	0	0	0	0	0	0	0



Report of Test

LLIA001574-006A-R01

Luminous Intensity (Candela) Table

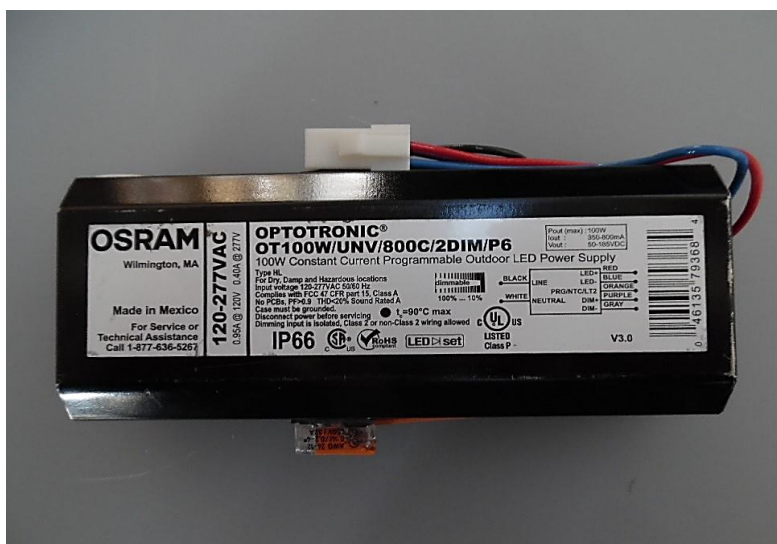
		Lateral (C-Plane) Angles														
		77.5	80	82.5	85	90	95	105	115	125	135	145	155	165	175	180
Vertical (Gamma) Angles - Data was acquired in 0.5° increments, 2.5° increments shown.	90	0	0	0	0	0	0	0	0	0	0	0	0	0	0	0
	92.5	0	0	0	0	0	0	0	0	0	0	0	0	0	0	0
	95	0	0	0	0	0	0	0	0	0	0	0	0	0	0	0
	97.5	0	0	0	0	0	0	0	0	0	0	0	0	0	0	0
	100	0	0	0	0	0	0	0	0	0	0	0	0	0	0	0
	102.5	0	0	0	0	0	0	0	0	0	0	0	0	0	0	0
	105	0	0	0	0	0	0	0	0	0	0	0	0	0	0	0
	107.5	0	0	0	0	0	0	0	0	0	0	0	0	0	0	0
	110	0	0	0	0	0	0	0	0	0	0	0	0	0	0	0
	112.5	0	0	0	0	0	0	0	0	0	0	0	0	0	0	0
	115	0	0	0	0	0	0	0	0	0	0	0	0	0	0	0
	117.5	0	0	0	0	0	0	0	0	0	0	0	0	0	0	0
	120	0	0	0	0	0	0	0	0	0	0	0	0	0	0	0
	122.5	0	0	0	0	0	0	0	0	0	0	0	0	0	0	0
	125	0	0	0	0	0	0	0	0	0	0	0	0	0	0	0
	127.5	0	0	0	0	0	0	0	0	0	0	0	0	0	0	0
	130	0	0	0	0	0	0	0	0	0	0	0	0	0	0	0
	132.5	0	0	0	0	0	0	0	0	0	0	0	0	0	0	0
	135	0	0	0	0	0	0	0	0	0	0	0	0	0	0	0
	137.5	0	0	0	0	0	0	0	0	0	0	0	0	0	0	0
	140	0	0	0	0	0	0	0	0	0	0	0	0	0	0	0
	142.5	0	0	0	0	0	0	0	0	0	0	0	0	0	0	0
	145	0	0	0	0	0	0	0	0	0	0	0	0	0	0	0
	147.5	0	0	0	0	0	0	0	0	0	0	0	0	0	0	0
	150	0	0	0	0	0	0	0	0	0	0	0	0	0	0	0
	152.5	0	0	0	0	0	0	0	0	0	0	0	0	0	0	0
	155	0	0	0	0	0	0	0	0	0	0	0	0	0	0	0
	157.5	0	0	0	0	0	0	0	0	0	0	0	0	0	0	0
	160	0	0	0	0	0	0	0	0	0	0	0	0	0	0	0
	162.5	0	0	0	0	0	0	0	0	0	0	0	0	0	0	0
	165	0	0	0	0	0	0	0	0	0	0	0	0	0	0	0
	167.5	0	0	0	0	0	0	0	0	0	0	0	0	0	0	0
	170	0	0	0	0	0	0	0	0	0	0	0	0	0	0	0
	172.5	0	0	0	0	0	0	0	0	0	0	0	0	0	0	0
	175	0	0	0	0	0	0	0	0	0	0	0	0	0	0	0
	177.5	0	0	0	0	0	0	0	0	0	0	0	0	0	0	0
	180	0	0	0	0	0	0	0	0	0	0	0	0	0	0	0



Report of Test

LLIA001574-006A-R01

Additional Pictures of Test Subject





Report of Test

LLIA001574-006A-R01

Test Distance 9.5 m
Ambient Temperature 24.8 °C

Notes

The laboratory has not participated in the selection of samples to be tested. All testing is performed on the understanding that the significance of the report is limited to the extent that the test sample is representative of production units.

Tested in accordance with the applicable sections of publications: IES LM-79-19. Format of reports and angular increments based on IES LM-31-95 and LM-10-96.

The device under test emits no detectable uplight, as defined by ANSI/IES LM-31-20. For the purpose of this report, certain non-zero uplight readings, attributable to instrument artifacts, have been assigned a zero value.

The luminous intensity values, and other derived quantities, contained in this report are based on absolute data.

Prorating the performance of the sample for the use of other component combinations (such as lamp / LED / Ballast / driver), or for use in different environmental conditions than that tested, may produce erroneous results.

This report is free of erasures and corrections.

Photometric intensity values are reported using the IES C-Type spherical coordinate system as defined in IES LM-75-01.

This report may contain data that are not covered by the NVLAP accreditation. Quantities marked with ‡ are not covered.

This report must not be used by the customer to claim product certification, approval or endorsement by NVLAP, NIST, or any agency of the Federal Government.

Revision

R01 - 11/11/2021 - Revised Catalog Number and quantity of LEDs



Report of Test

LLIA001574-006B-R01*

Integrating Sphere Report

Catalog Number: NXT-24S-5-X-2ES-6-XX-4-XX-X-XX-X

Pole/arm mounted, grey painted cast aluminum housing and door/driver compartment cover, one circuit board, one clear plastic lens with optic below each LED and clear flat glass enclosure.

24 white LEDs

Osram Optotronic OT100W/UNV/800C/2DIM/P6 LED driver labeled as 600mA, WH91-5U1-03 surge suppressor



Performance Summary

Voltage	120.1 Vac
Current	0.3997 A
Power	47.52 W
Frequency	59.99 Hz
Power Factor	0.990
Current THD	1.1 %

Total Luminous Flux	5607.2 lm
Efficacy	118.0 lm/W
Chromaticity (x,y)	(0.4321, 0.4067)
(u',v')	(0.2463, 0.5217)
Duv	0.0018
CCT	3104 K
CRI (Ra)	73
R9	-27
TM-30: Rf	71
TM-30: Rg	97
TM-30: Rcs,h1	-15

Prepared For:

LED Roadway Lighting

84 Chain Lake Drive

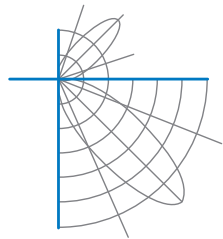
Suite 403

Halifax, Nova Scotia B3S 1A2, Canada

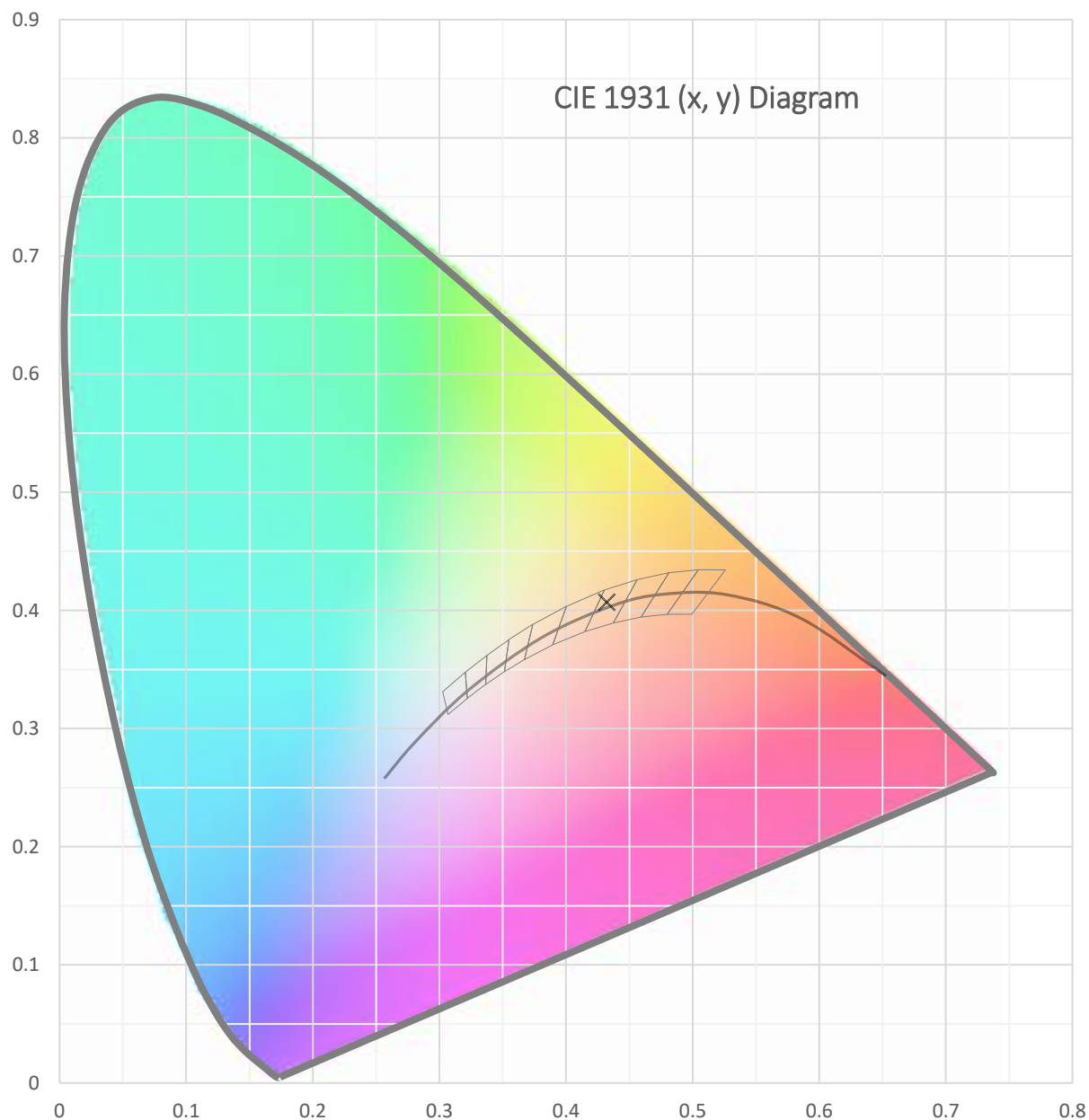
*This test report supersedes test report LLIA001574-006B

Test date: 11/04/2021

Report date: 11/11/2021

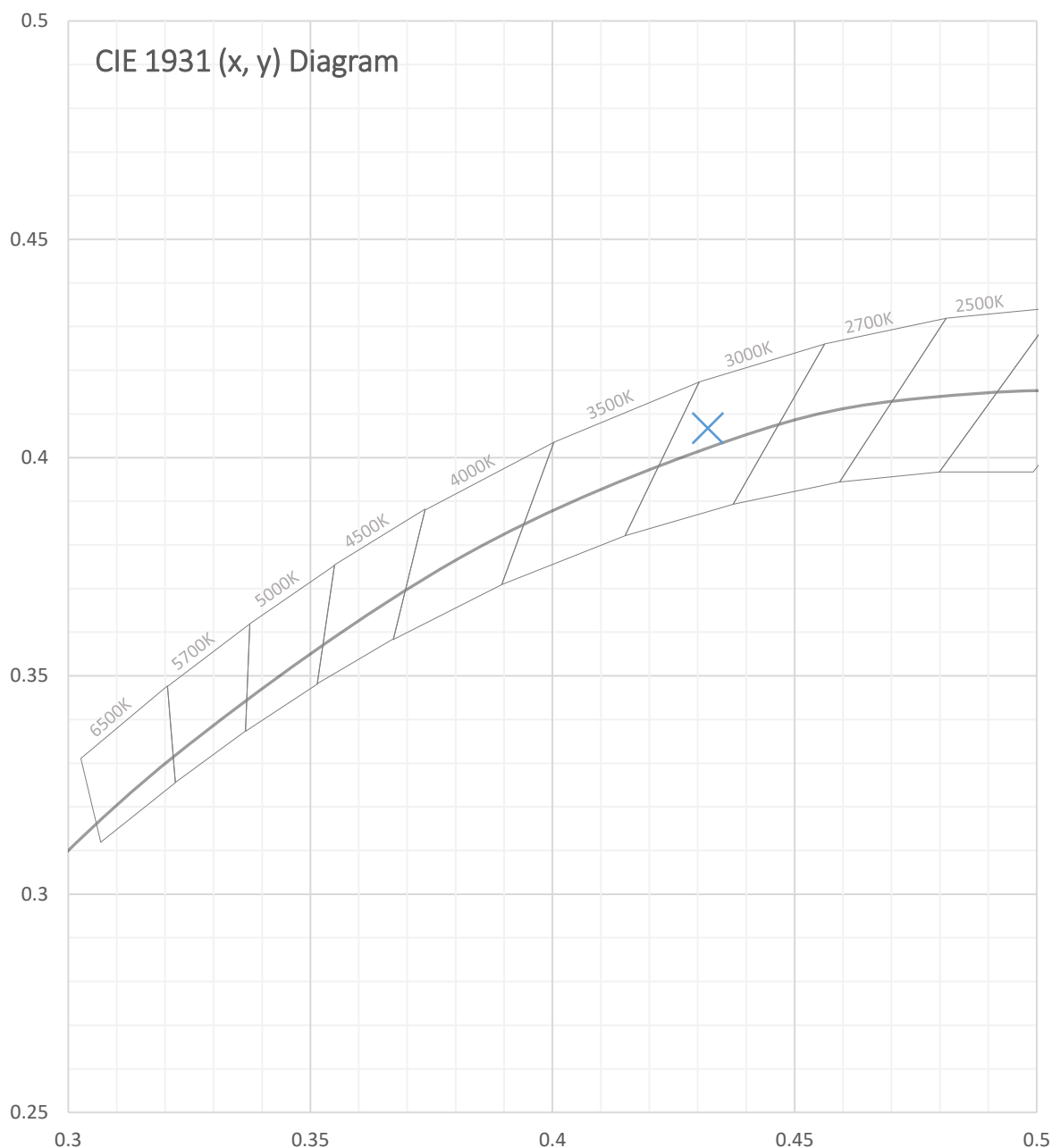


Test Report Number: LLIA001574-006B-R01





Test Report Number: LLIA001574-006B-R01





Test Report Number: LLIA001574-006B-R01

Total Radiant Flux	16.09 W
Total Luminous Flux	5607.2 Lm
Chromaticity CIE 1931 (x, y)	(0.4321, 0.4067)
Chromaticity CIE 1976 (u', v')	(0.2463, 0.5217)
Correlated Color Temperature (CCT)	3104 K
Color Rendering Index (Ra)	73
R1	70
R2	80
R3	91
R4	72
R5	69
R6	74
R7	80
R8	48
R9	-27
R10	55
R11	69
R12	49
R13	72
R14	94
TM-30: Rf	71
TM-30: Rg	97
TM-30: Rcs,h1	-15
Distance from Planckian Locus (Duv)	0.0018
Scotopic/Photopic Ratio $\frac{V(\lambda)_{sc}}{V(\lambda)_{ph}}$	1.223

Electrical Data

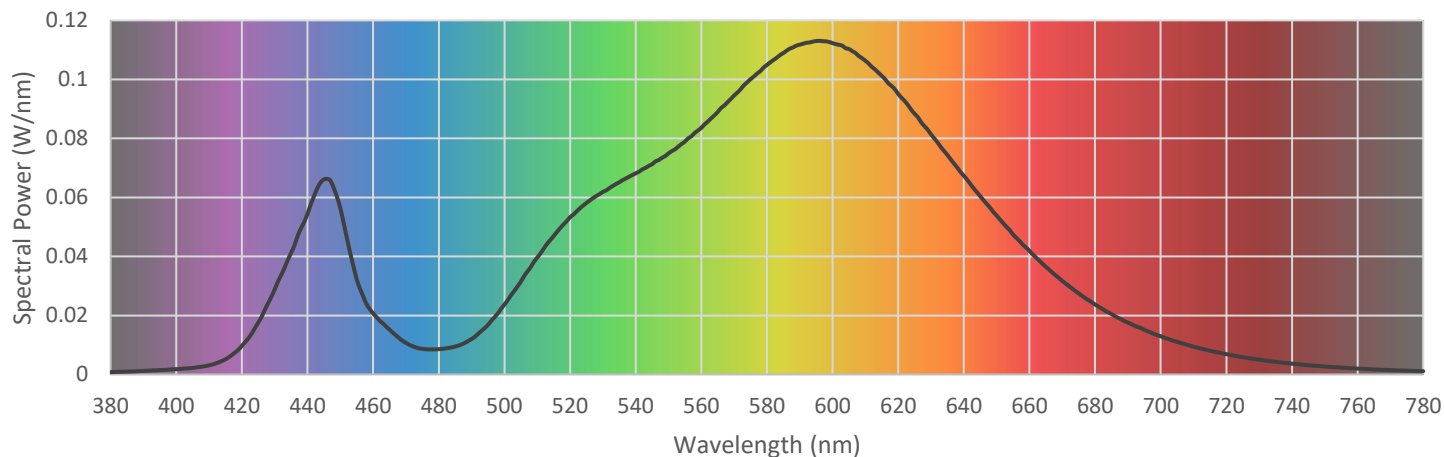
Voltage	120.1 Vac
Current	0.3997 A
Power	47.52 W
Frequency	59.99 Hz
Power Factor	0.990
Current THD	1.1 %



Test Report Number: LLIA001574-006B-R01

Summary Spectral Power Distribution (wavelength - nm, spectral power - W/nm)

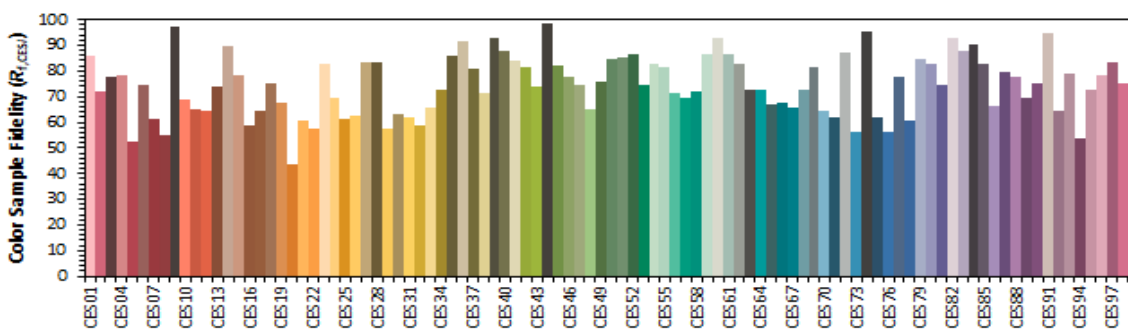
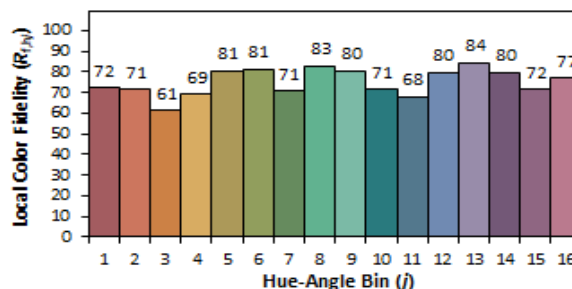
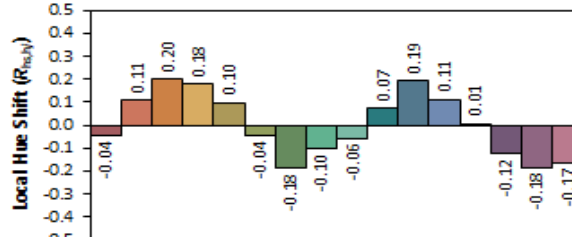
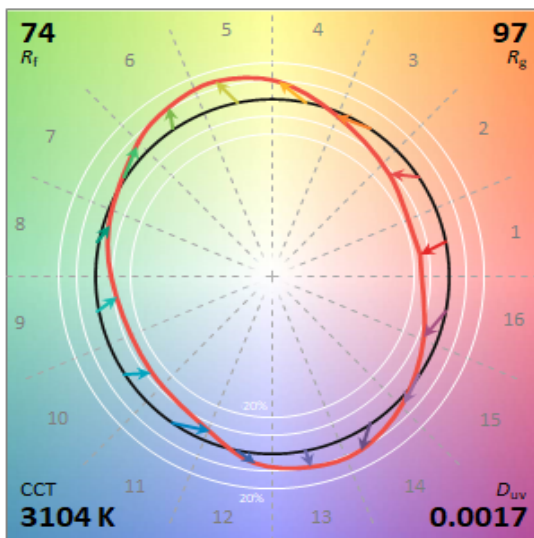
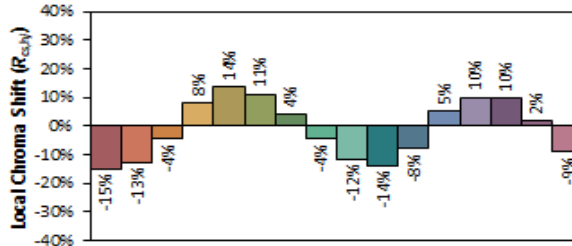
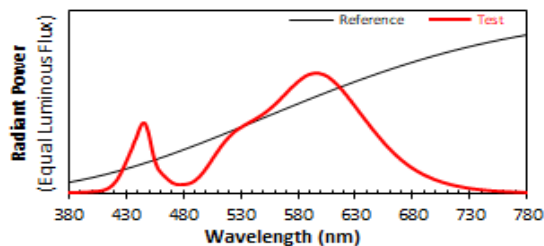
380	0.000815	480	0.008584	580	0.104895	680	0.023684
385	0.000954	485	0.009477	585	0.108924	685	0.020477
390	0.001220	490	0.012023	590	0.111763	690	0.017567
395	0.001523	495	0.016822	595	0.112984	695	0.015135
400	0.001799	500	0.023684	600	0.112295	700	0.012944
405	0.002224	505	0.031444	605	0.110303	705	0.011041
410	0.003094	510	0.039640	610	0.106318	710	0.009442
415	0.005165	515	0.046921	615	0.101197	715	0.008049
420	0.009735	520	0.053311	620	0.095068	720	0.006881
425	0.017608	525	0.058137	625	0.088335	725	0.005857
430	0.028849	530	0.061891	630	0.081374	730	0.005022
435	0.041242	535	0.065134	635	0.074364	735	0.004276
440	0.054518	540	0.068167	640	0.067341	740	0.003663
445	0.066088	545	0.071253	645	0.060406	745	0.003148
450	0.056303	550	0.074921	650	0.053840	750	0.002702
455	0.032185	555	0.078922	655	0.047424	755	0.002322
460	0.020663	560	0.083595	660	0.041884	760	0.002000
465	0.015169	565	0.088950	665	0.036476	765	0.001714
470	0.010702	570	0.094540	670	0.031696	770	0.001481
475	0.008683	575	0.100051	675	0.027480	775	0.001272
						780	0.001106





Test Report Number: LLIA001574-006B-R01

IES TM-30 Details



Notes:

x 0.4321
y 0.4067
u' 0.2464
v' 0.5217

CIE 13.3-1995
(CRI)

R_a 73
R_g -27



Test Report Number: LLIA001574-006B-R01

Test Equipment Configuration: LightLab International Allentown 2m Integrating Sphere
Measurements acquired using a Labsphere CDS 2600 spectroradiometer
Testing was performed using 4π geometry

Test Temperature: 25.3 °C

Test Procedure: Tested in accordance with the applicable sections of:
LM-79-19, LM-78-07, LM-58-13, ANSI/ANSI C78.377-2017, TM-30-18

Significance: The laboratory has not participated in the selection of samples to be tested.
All testing is performed on the understanding that the significance of the report is limited to the extent that the test sample is representative of production units.

Notes: The measurements and other derived quantities contained in this report are based on the absolute data as measured.

Prorating the performance of the sample for the use of other component combinations (such as lamp / LED / Ballast / driver), or for use in different environmental conditions than that tested, may produce erroneous results.

This report is free of erasures and corrections

This report may contain data that are not covered by the NVLAP accreditation. Quantities marked with ‡ are not covered.

This report must not be used by the customer to claim product certification, approval or endorsement by NVLAP, NIST, or any agency of the Federal Government.

Revision: R01 - 11/11/2021 - Revised Catalog Number and quantity of LEDs



Report of Test

LLIA001574-006C-R01*

Electrical Test Report

Catalog Number: NXT-24S-5-X-2ES-6-XX-4-XX-X-XX-X

Pole/arm mounted, grey painted cast aluminum housing and door/driver compartment cover, one circuit board, one clear plastic lens with optic below each LED and clear flat glass enclosure.

24 white LEDs

Osram Optotronic OT100W/UNV/800C/2DIM/P6 LED driver labeled as 600mA, WH91-5U1-03 surge suppressor



Performance Summary

Voltage	277.0 Vac
Current	0.1905 A
Power	47.46 W
Frequency	60.00 Hz
Power Factor	0.900
Current THD	5.6 %

Ambient Temperature: 24.9 °C

Prepared For:
LED Roadway Lighting
84 Chain Lake Drive
Suite 403

Halifax, Nova Scotia B3S 1A2, Canada

*This test report supersedes test report LLIA001574-006C

R01 - 11/11/2021 - Revised Catalog Number and quantity of LEDs

Tested in accordance with the applicable sections of IES LM-79-19. The laboratory has not participated in the selection of samples to be tested. All testing is performed on the understanding that the significance of the report is limited to the extent that the test sample is representative of production units. Prorating the performance of the sample for the use of other component combinations (such as lamp / LED / Ballast / driver), or for use in different environmental conditions than that tested, may produce erroneous results. This report is free of erasures and corrections. This report must not be used by the client to claim product certification, approval, or endorsement by NVLAP, NIST, or any agency of the U.S. Government.

Test date: 11/04/2021
Report date: 11/11/2021

Electrical Report Template V1-3